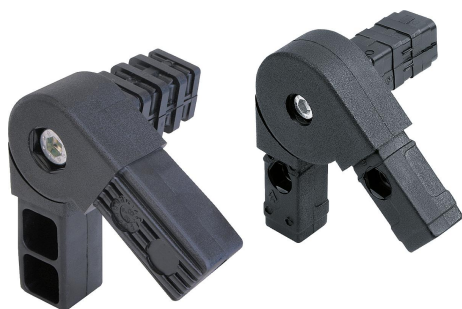


## Square tube connectors three-way swivel

### Item description/product images



### Description

#### Material, version:

Polyamide PA, black.

DIN 6912 screws and DIN 934 nuts electro zinc-plated steel.

#### Note:

The tube connectors are simply pushed into the appropriate square tubing. They can be dismantled and reused repeatedly. The swivel angle can be seamlessly adjusted. The third spigot can be revolved around its own axis.

#### Assembly:

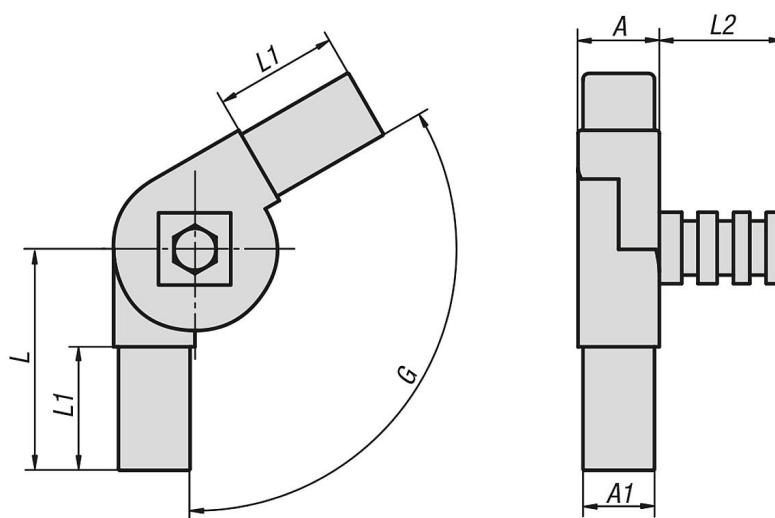
There are two chambers in each of the two journals on the joint, into which hex nuts (not supplied) can be inserted if required to secure the journals in the tube:

- Connector 20x20: 10AF
- Connector 25x25: no chamber
- Connector 30x30: 13AF

#### Accessory:

- Square tubes K0627
- Finned square tubes K0628

### Drawings



### Square tube connectors, three-way swivel

Order No.	A	A1	L	L1	L2	G	Suitable for square tubes
K0626.1201511	20	17	59	34	42	0° - 190°	20 x 20 x 1,5
K0626.1251511	25	22	68	38	42	0° - 190°	25 x 25 x 1,5
K0626.1251512	25	22	59	38	42	45° - 195°	25 x 25 x 1,5
K0626.1302011	30	26	75	40	41	0° - 190°	30 x 30 x 2
K0626.1302012	30	26	68	42	41	45° - 200°	30 x 30 x 2

