

Clamping angle style B, with adjustable handle

Item description/product images



Description

Material:

Clamping angle die-cast zinc.
Handle die-cast zinc DIN EN 12844.
Metal parts stainless steel 1.4305.

Version:

Clamping angle painted aluminum tone.
Handle powder-coated.
Stainless steel bright.

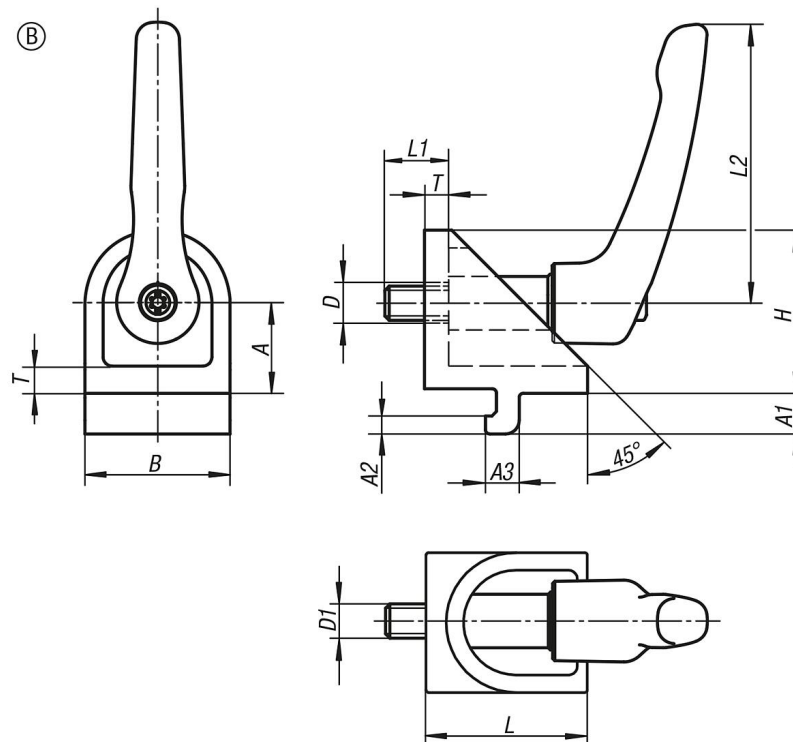
Note:

The clamping angles are used for connecting two profiles of the same series that have contact on the side faces and cross at any angle.

Loosening the screw releases both clamps allowing free rotation and sliding along the slots.

The clamping angles are generally used in pairs or in combination with a joint angle.

Drawings



Clamping angle style B, with adjustable handle

| Order No. | Type | Slot width | style | Version 1 | A | A1 | A2 | A3 | B | D | D1 | H | H1 | H2 | L | L1 | L2 | T |
|------------|------|------------|-------|------------------------|----|-----|----|-----|----|---|----|----|----|----|----|----|----|---|
| K1049.0606 | I | 6 | B | with adjustable handle | 15 | 6,3 | 3 | 5,7 | 24 | 7 | M6 | 27 | - | - | 27 | 13 | 40 | 5 |
| K1049.0808 | I | 8 | B | with adjustable handle | 20 | 9 | 4 | 7,5 | 32 | 9 | M8 | 36 | - | - | 36 | 18 | 65 | 6 |