

Quarter-turn locks stainless steel

Item description/product images



Description

Material:

Stainless steel 1.4305.

Version:

Bright.

Note:

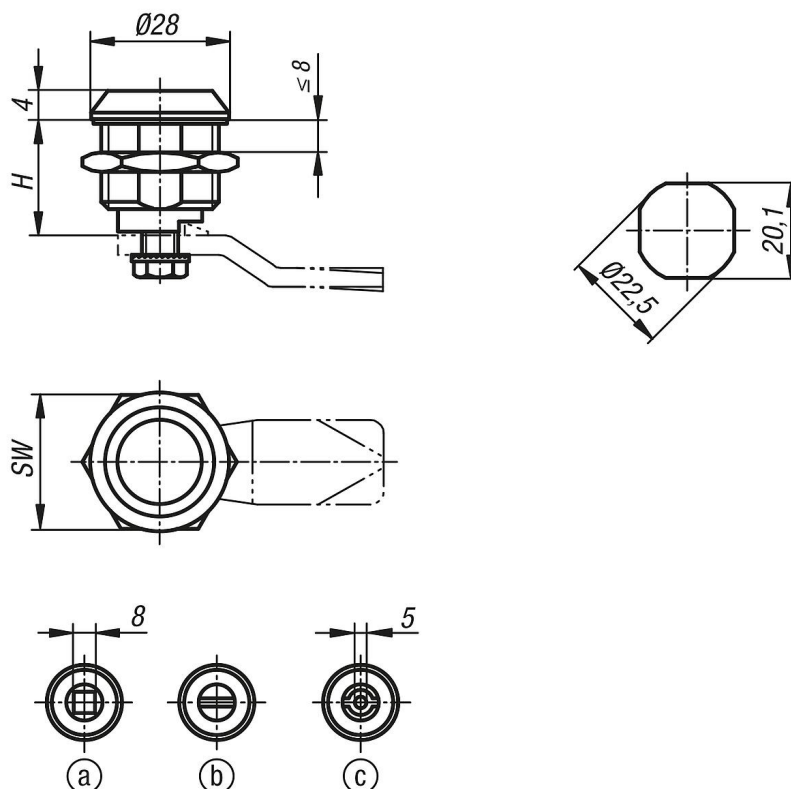
Rating IP65. Achieved using an additional O-ring underneath the actuator and a PUR seal foamed onto the housing. The quarter-turn lock can be installed pre-assembled.

Drawing reference:

Actuation:

- a) square 8 mm
- b) slot
- c) double lug 5 mm

Drawings



Order No.	Actuation	H	SW
K1106.40186	double bit 5 mm	18	27
K1106.20186	slot	18	27
K1106.18186	square 8 mm	18	27

