

Grease nipples conical head DIN 71412, style A, straight

Item description/product images



Description

Material:

Steel or stainless steel 1.4305.

Version:

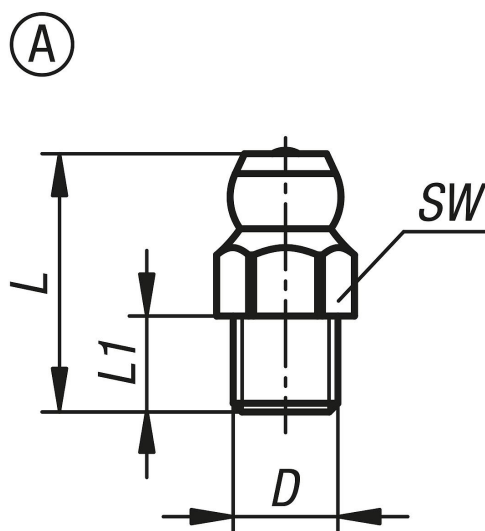
Steel hardened, min. 550 HV 1, electro zinc-plated.

Stainless steel bright.

Note:

The conical head grease nipples have a tapered thread. They are suitable for grease points which must be lubricated often and reliably. Their versatility makes them the most widespread type of grease nipple.

Drawings



| Order No. | style | Style definition | Main material | D | L1 | L max. | SW |
|---------------|-------|------------------------------|-----------------|---------|----|--------|----|
| K1132.1106100 | A | straight with hexagon socket | steel | M6X1 | 6 | 16 | 7 |
| K1132.1108100 | A | straight with hexagon socket | steel | M8X1 | 6 | 16 | 9 |
| K1132.1108125 | A | straight with hexagon socket | steel | M8X1,25 | 6 | 16 | 9 |
| K1132.1110100 | A | straight with hexagon socket | steel | M10X1 | 6 | 16 | 11 |
| K1132.1110150 | A | straight with hexagon socket | steel | M10X1,5 | 6 | 16 | 11 |
| K1132.1118 | A | straight with hexagon socket | steel | R1/8 | 6 | 16 | 11 |
| K1132.1114 | A | straight with hexagon socket | steel | R1/4 | 6 | 16 | 14 |
| K1132.2106100 | A | straight with hexagon socket | stainless steel | M6X1 | 6 | 16 | 7 |
| K1132.2108100 | A | straight with hexagon socket | stainless steel | M8X1 | 6 | 16 | 9 |
| K1132.2108125 | A | straight with hexagon socket | stainless steel | M8X1,25 | 6 | 16 | 9 |
| K1132.2110100 | A | straight with hexagon socket | stainless steel | M10X1 | 6 | 16 | 11 |
| K1132.2110150 | A | straight with hexagon socket | stainless steel | M10X1,5 | 6 | 16 | 11 |

Grease nipples conical head DIN 71412, style A, straight

| Order No. | style | Style definition | Main material | D | L1 | L max. | SW |
|------------|-------|------------------------------|-----------------|------|----|--------|----|
| K1132.2118 | A | straight with hexagon socket | stainless steel | R1/8 | 6 | 16 | 11 |
| K1132.2114 | A | straight with hexagon socket | stainless steel | R1/4 | 6 | 16 | 14 |