

## Snap-in pins, steel for clevis DIN 71752

### Item description/product images



### Description

**Material:**

Pin, steel.

Spring, tempered leaf spring steel.

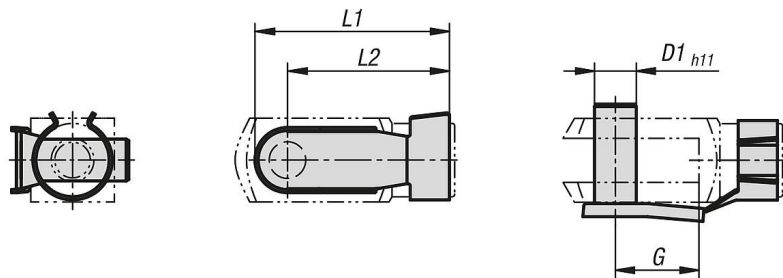
**Version:**

Electro zinc-plated.

**Note:**

For DIN 71752 clevis.

### Drawings



### Snap-in pins, steel for clevis DIN 71752

Order No.	D1	G	L1	L2
K1139.0408	4	8	18,5	15
K1139.0510	5	10	23	19
K1139.0612	6	12	28	23
K1139.0816	8	16	37	30
K1139.0832	8	32	52	46
K1139.1020	10	20	46	38
K1139.1040	10	40	66	58
K1139.1224	12	24	53	45
K1139.1248	12	48	78	69
K1139.1428	14	28	62	52
K1139.1632	16	32	73	62
K1139.2040	20	40	87,5	71,5