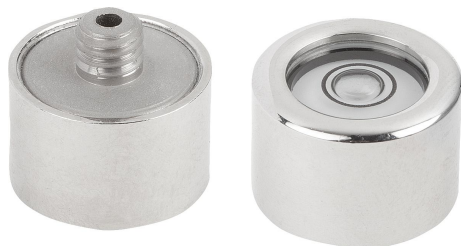


## Bullseye levels in round frame, style B with grub screw

### Item description/product images



### Description

#### Material:

Frame brass.

Bullseye level body polyamide.

#### Version:

Nickel-plated and high-gloss polished.

#### Note:

Bubble levels are used as a type of zero indicator instrument for checking horizontal inclination in e.g. spirit levels, inclinometers, metrology instruments and machine constructions.

style B can be fastened using a grub screw.

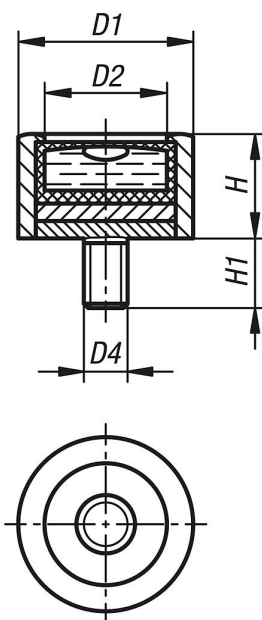
- Sensitivity in angular minutes for 2 mm bubble travel
- The bullseye level is calibrated to the seating face of frame
- Various threads are available
- Clear filling
- Black contrast ring
- White level base

#### Temperature range:

-35 °C up to +55 °C.

### Drawings

Ⓑ



Order No.	style	D1	D2	D4	H	H1	Sensitivity
K1155.2140730	B	14	10	M4	7,5	5	30'
K1155.2181230	B	18	12	M6	12	5	30'
K1155.2201230	B	20	14	M5	12	8	30'

**Bullseye levels in round frame, style B with grub screw**

Order No.	style	D1	D2	D4	H	H1	Sensitivity
K1155.2301530	B	30	21	M8	15	10	30'