

Tubular bubble levels with frame to screw on, style A, one sight glass

Item description/product images



Description

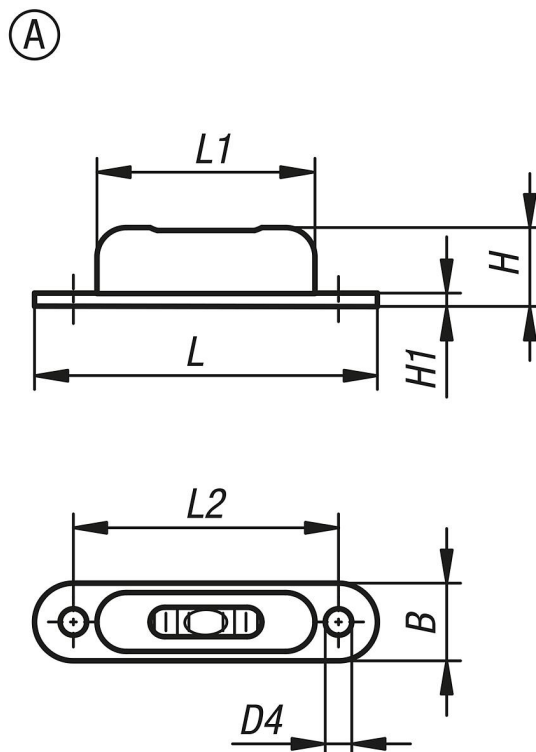
Material:
 Frame brass.
 Tubular bubble vial glass.

Version:
 Nickel-plated and high-gloss polished.

Note:
 Bubble levels are used as a type of zero indicator instrument for checking horizontal inclination in e.g. spirit levels, inclinometers, metrology instruments and machine constructions.
 The tubular levels can be fastened using the two holes.
 - style A: one sight window
 - style B: three sight windows
 - Sensitivity in angular minutes for 2 mm bubble travel
 - Green filling

Temperature range:
 -35 °C up to +55 °C.

Drawings



Order No.	style	B	D4	H	H1	L	L1	L2	Sensitivity
K1158.1571350	A	12,3	4,5	13	1	57	37	45	50'

