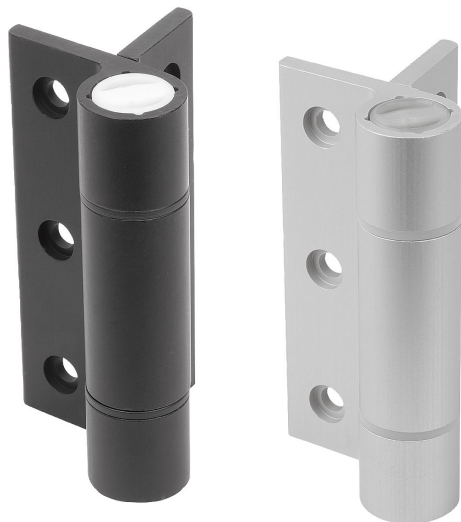


## Spring hinges aluminum profile, 3.8 Nm, spring open

### Item description/product images



### Description

**Material:**

aluminum 6060 T5.  
End caps PA 6.6.  
Washers POM.

**Version:**

Black anodized.  
Colorless anodized.

**Note:**

These hinges have steel tension springs which enables doors and hatches to open or close automatically.  
Opening angle 270°.

**Spring torque:**

M(0°): 3.80 Nm / M(90°): 3.10 Nm / M(180°): 2.40 Nm

Fastened using DIN 912/EN ISO 4762 socket head screws.

The loading values given for the hinges are non-binding reference values without consideration of safety factors and exclude any liability. The values given are for information purposes only and do not constitute a legally binding assurance of properties.

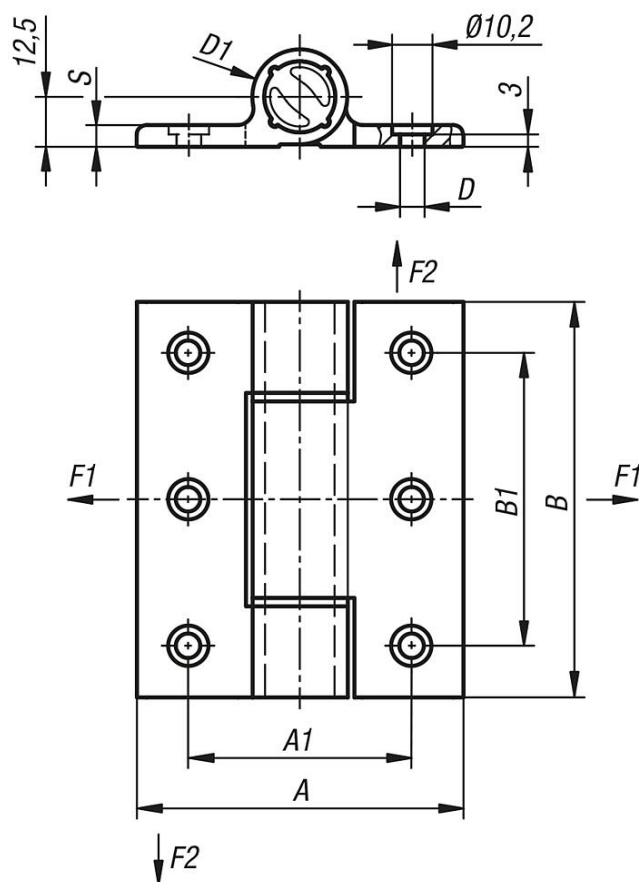
These load values were determined under laboratory conditions. Each user must determine individually whether the hinge is suitable for the respective application. Different materials onto which the hinges are installed and the type of mounting, weather conditions and wear can influence the determined values.

**Temperature range:**

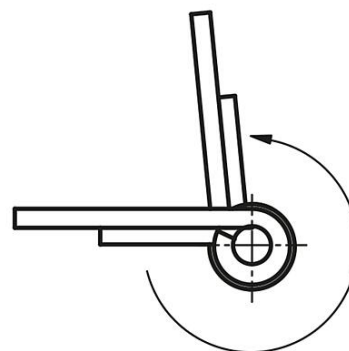
From -20°C to +80°C

**Accessory:**

Socket head screws with hexagon socket DIN 912/EN ISO 4762.

**Drawings**


Hinges with opening spring



Order No.	Main color	Surface finish body	A	A1	B	B1	D	D1	S
K1182.8210001	black	anodized	82,5	56,5	100	74	6,2	24	5,5
K1182.821000	colorless	anodized	82,5	56,5	100	74	6,2	24	5,5