

Hinges aluminum, with adjustable friction, style A

Item description/product images



Description

Material:

aluminum 6060 T5.
body POM.
Set screw stainless steel.
Washers PA.

Version:

Black anodized

Note:

These torque hinges enable doors to remain open in any position. A set screw enables the amount of friction to be infinitely adjusted between 0-5 Nm.
Opening angle 225°.

Max. tensile strength: 6000 N

Max. shear strength: 5000 N

The loading values given for the hinges are non-binding reference values without consideration of safety factors and exclude any liability. The values given are for information purposes only and do not constitute a legally binding assurance of properties.

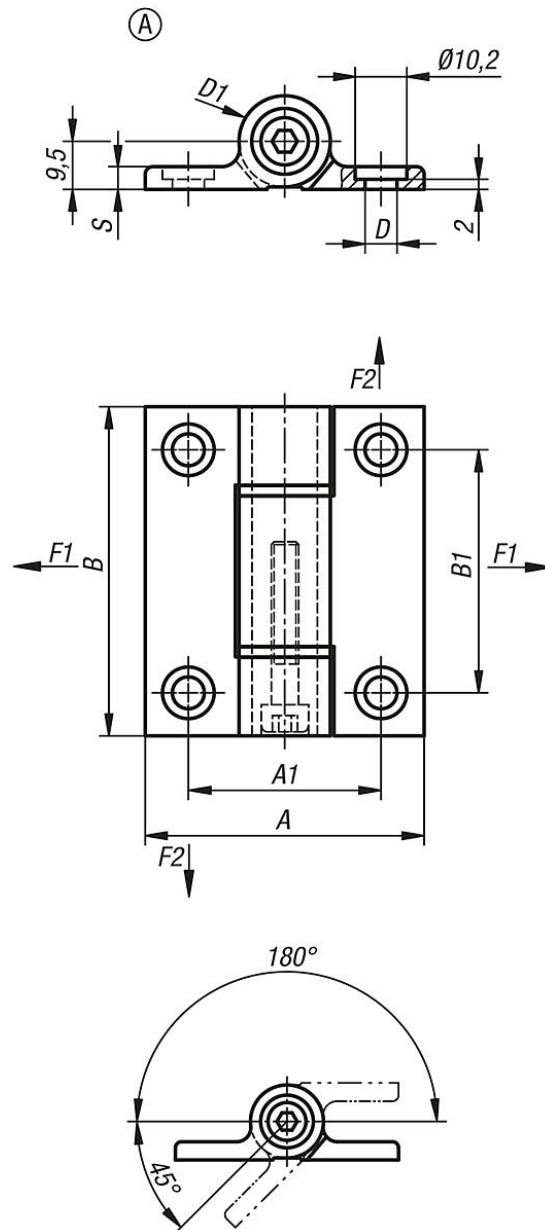
These load values were determined under laboratory conditions. Each user must determine individually whether the hinge is suitable for the respective application. Different materials onto which the hinges are installed and the type of mounting, weather conditions and wear can influence the determined values.

Temperature range:

From -20°C to +80°C

Hinges aluminum, with adjustable friction, style A

Drawings



| Order No. | style | A | A1 | B | B1 | D | D1 | S | F1 N | F2 N |
|-------------|-------|----|----|----|----|-----|----|-----|---------|---------|
| K1196.55651 | A | 55 | 38 | 65 | 48 | 6,3 | 18 | 4,5 | 8960 | 8070 |