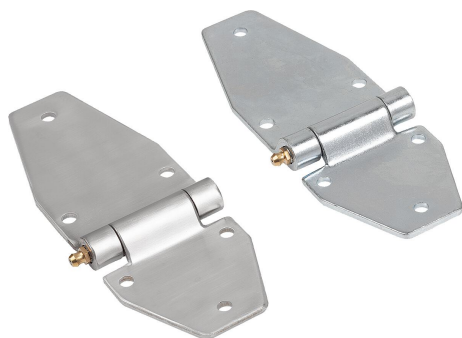


# Strap hinges, steel or stainless steel, style A, long leaf

## Item description/product images



## Description

### Material:

Steel.

Stainless steel 1.4301.

### Version:

Steel electro zinc-plated, chromed or matt brass plated.

Stainless steel matt polished.

### Note:

Strap hinge for inwards opening doors.

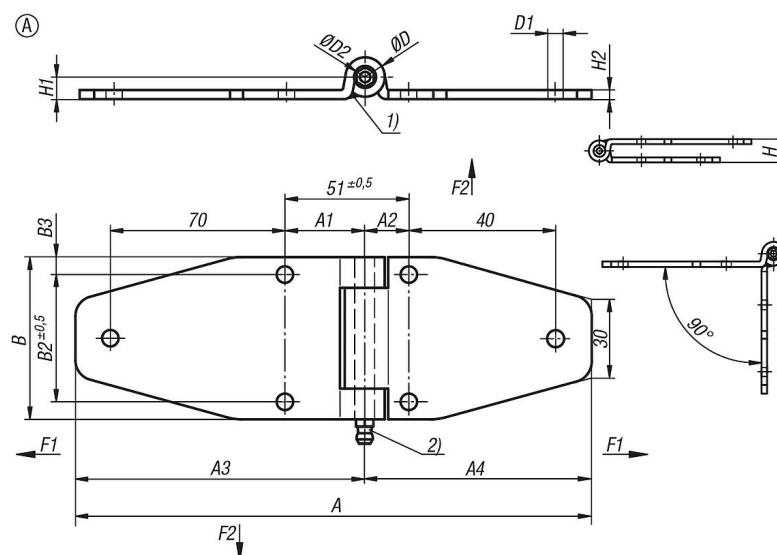
The opening angle is max. 270°.

The loading values given for the hinges are non-binding reference values without consideration of safety factors and exclude any liability. The values given are for information purposes only and do not constitute a legally binding assurance of properties. These load values were determined under laboratory conditions. Each user must determine individually whether the hinge is suitable for the respective application. Different materials onto which the hinges are installed, the type of mounting, weather conditions and wear can influence the determined values.

### Drawing reference:

- 1) Both rolled ends of long leaf are welded
- 2) grayse nipple
- 3) Fixed pin

## Drawings



Order No.	style	Style definition	Main material	Surface finish body	A	A1	A2	A3	A4	B	B2	B3	F1 N	F2 N
K1347.06701161932	A	-	stainless steel A2	matt polished	186	32	19	116	70	65	51	7	-	2500
K1347.067011619321	A	-	steel	electro zinc-plated	186	32	19	116	70	65	51	7	7500	1300

**Strap hinges, steel or stainless steel, style A, long leaf**

---

Order No.	D	D1	D2	H	H1	H2
K1347.06701161932	16	6,6	8	18	9	3,75
K1347.067011619321	16,5	6,6	8	19	9,5	4