

Quarter-turn locks, stainless steel Hygienic DESIGN, with two-flat actuation

Item description/product images



Description

Material:

Housing, actuator and fastening nut stainless steel 1.4404.

O-rings silicone, red or blue, FDA-compliant.

Locking screw stainless steel 1.4301.

Version:

Bright.

Note:

The quarter-turn lock fulfils the hygiene requirements of DIN EN ISO 14159 and DIN EN 1672-2.

Particularly suitable for use in the food and beverage industry.

O-rings (FDA-compliant) prevent the ingress of liquid and formation of contamination.

IP65 / IP67 / IP69K in accordance with DIN EN 60529 / DIN 40050.

Please order the tongue in the desired version separately. Every tongue can be combined with every housing.

*Dimension A results from the combination of the quarter turn lock and the tongue and is specified with the matching tongues.

Accessory:

Key K1335.113

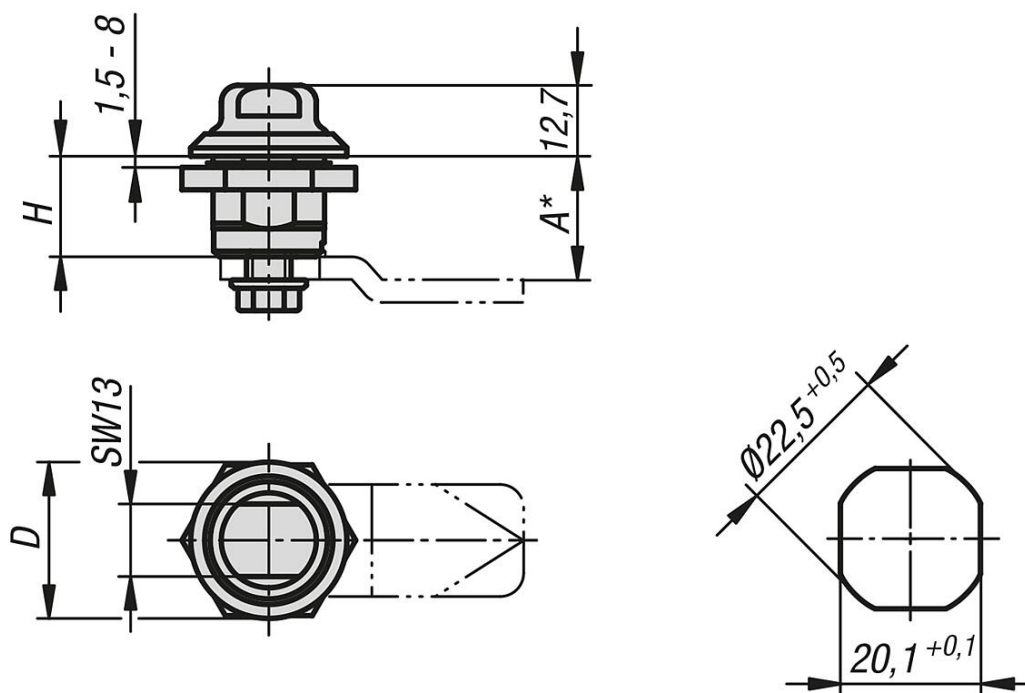
Ring/open spanner K1362.16

Protective cap K1362.1613

Tongue for stainless steel quarter-turn lock K1340.

Quarter-turn locks, stainless steel Hygienic DESIGN, with two-flat actuation

Drawings



Quarter-turn locks, stainless steel Hygienic DESIGN, with two-flat actuation

Order No.	Component color	Actuation	D	H
K1353.18	red	double flat	28	18
K1353.181	blue	double flat	28	18