

## Protective caps for open-end spanner

### Item description/product images



### Description

#### Material:

AlSi1MgMn

#### Note:

The protective cap was specially developed for tightening and loosening screw connections with sensitive surfaces. With normal tools, the surface of polished screws are so damaged from the first tightening, that cavities are created making easy and effective cleaning no longer possible.

The protective caps ensure damage free tightening and loosening of fasteners with outer contours. The soft aluminum leaves no scratches or other damage on sensitive surfaces. By correct and professional use the protective caps have a service life of ca. 1000 operating cycles.

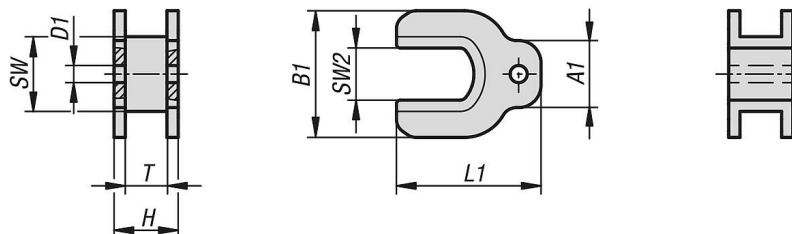
Additionally, with the protective caps the risk of contact corrosion is reliably prevented on stainless steel fasteners. The projecting contour largely prevents unintentional contact points between spanner and stainless steel screw.

The protective cap is held securely in the spanner by a special moulding or spring clip element. The cap cannot fall out on its own. Worn-out protective caps are changed manually.

#### On request:

Other sizes.

### Drawings



Order No.	Item	Version 1	SW	SW2	A1	B1	L1	D1	T	H
K1362.1005	Protective Insert	for open-end spanner	10	5	9	17	19,4	2,3	5,6	8,6
K1362.10055	Protective Insert	for open-end spanner	10	5,5	9	17	19,4	2,3	5,6	8,6
K1362.1006	Protective Insert	for open-end spanner	10	6	9	17	19,4	2,3	5,6	8,6
K1362.1007	Protective Insert	for open-end spanner	10	7	9	17	19,4	2,3	5,6	8,6
K1362.1108	Protective Insert	for open-end spanner	11	8	9	18	20,7	2,3	5,7	8,7
K1362.1310	Protective Insert	for open-end spanner	13	10	10	22	23,2	3	6,7	10,7
K1362.1613	Protective Insert	for open-end spanner	16	13	13	27	28,6	3	7,7	11,7
K1362.1915	Protective Insert	for open-end spanner	19	15	13	30	32,5	4	8,6	12,6
K1362.1916	Protective Insert	for open-end spanner	19	16	13	30	32,5	4	8,6	12,6
K1362.2118	Protective Insert	for open-end spanner	21	18	13	32	35	4	9	13
K1362.2119	Protective Insert	for open-end spanner	21	19	13	32	35	4	9	13
K1362.2724	Protective Insert	for open-end spanner	27	24	14	40	43,8	4	10,8	15

