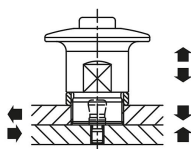


## Push button latches, stainless steel with stainless steel head

### Item description/product images



### Description

**Product description:**

Push button latches are used for replacing and locking fixtures or hatches quickly and easily.

Toolless clamping shortens setup times.

**Material:**

Housing and push button stainless steel.

**Version:**

Housing and push button bright.

**Note:**

style A for plate thickness 3 to 10 mm.

style B for plate thickness 3 to 27 mm.

A gap of more than 0.1 mm appears between the plates if the retaining force is exceeded.

**Type of operation:**

Press the latch over the clamping pin without pressing the knob. The latch is now locked.

To release, press the button and pull the latch off.

**Application:**

Mounting option A in combination with spacer rings, for plate thickness 3 to 10 mm.

Mounting option B for plate thickness 10 to 27 mm.

**Attention:**

The specified pull-out forces apply only in combination with clamping pin K1564.

**Accessory:**

Spacer rings K1563.

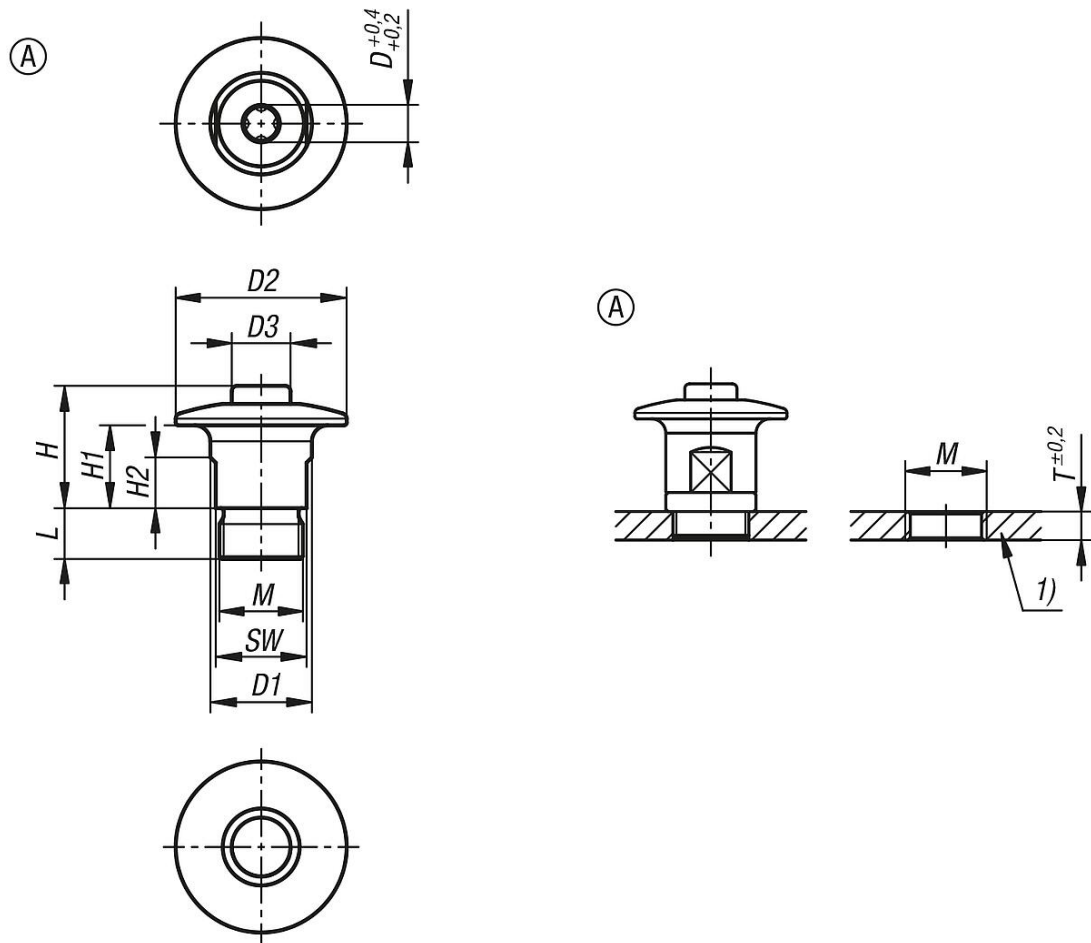
Clamping pins K1564.

**Drawing reference:**

1) plate

# Push button latches, stainless steel with stainless steel head

## Drawings



Order No.	style	Version 1	D	D1	D2	D3	H	H1	H2	L	M	SW	T	Holding force N	Clamping force N	Shearing force kN	Pullout force F kN	Temperature resistance
K1562.11	A	with head	6	19	32	11	23	15,5	8,5	9,5	M16X1	17	3	100	6	1,1	0,25	≤180 °C