

Swivel casters with stop fix, electrically conductive

Item description/product images



Description

Material:

Housing steel plate.

Wheels with thermoplastic rubber tread.

Wheel body polypropylene.

Version:

Housing press styleed.

Double ball bearing in the caster head.

Plain bearing in wheels.

Note:

Wheel axle threaded. Swivel casters with mounting plate. Electrically conductive wheels, non-marking grey. The ohmic resistance of the wheel $\leq 10^4 \Omega$.

Application:

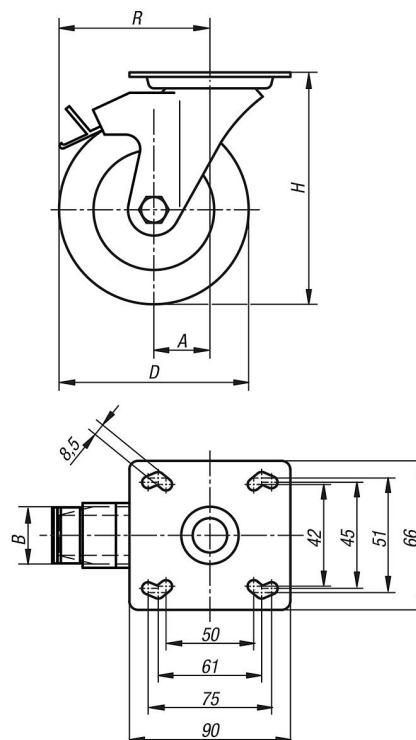
Electrically conductive wheels on swivel and fixed casters are used to protect against electrostatic discharge generated by transport equipment or the transported goods. Damage to sensitive goods and painful electrostatic shocks to the personal is so prevented.

Temperature range:

-20 °C to +60 °C.

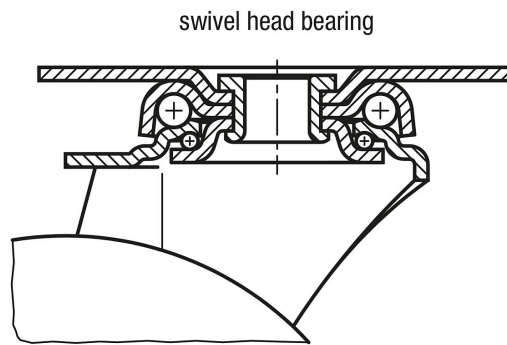
Drawings

swivel castor
with "stop-fix"



Swivel casters with stop fix, electrically conductive

Drawings



| Order No. | Item | Version 1 | Wheel bearing | A | B | D | H | R | Permissible load kg |
|----------------|---------------|------------------------------|---------------|----|----|-----|-----|-------|---------------------|
| K1760.11080322 | Swivel caster | with stop-fix locking system | plain bearing | 40 | 32 | 80 | 111 | 80 | 65 |
| K1760.11100322 | Swivel caster | with stop-fix locking system | plain bearing | 40 | 32 | 100 | 136 | 90 | 70 |
| K1760.11125322 | Swivel caster | with stop-fix locking system | plain bearing | 40 | 32 | 125 | 161 | 102,5 | 80 |