

Cam levers, steel with internal thread, plastic thrust washer - inch

Item description/product images

INCH
Parts



Description

Product description:

These cam levers have a technically optimised plastic thrust washer.

The thrust washer is made of a special high-performance plastic that guarantees very good wear and creep resistance.

Material:

Handle steel 1.0401.

Thrust washer high performance plastic, carbon-fibre reinforced thermoplastic.

Hinge pin stainless steel 1.4305 (AISI 303 equivalent).

Version:

Handle blue passivated.

Thrust washer, black.

Hinge pin bright.

Note:

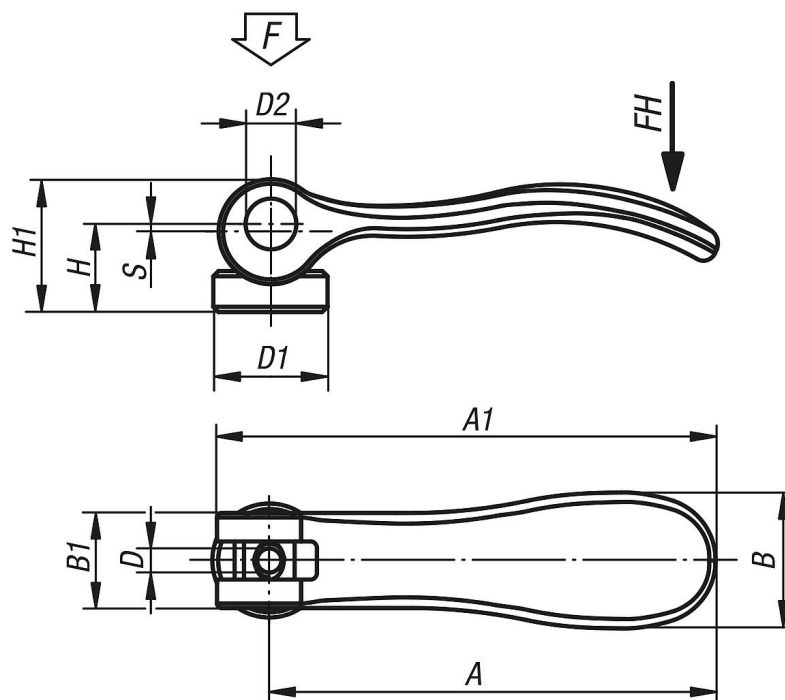
Plastics are subject to creeping under load (retardation).

Accessory:

For slightly curved contact faces, a stainless steel washer K2130 can also be ordered.

This washer can be mounted between the thrust washer and the contact face.

Drawings



Order No.	D	D1	D2	B	B1	H	H1	A	A1	Travel S	Clamping force F (kN)	Hand force FH N
K2123.15022A1	10-32	16	9	21,5	15	14,7	22,2	70,4	79,2	1,2	4	120

Cam levers, steel with internal thread, plastic thrust washer - inch

Order No.	D	D1	D2	B	B1	H	H1	A	A1	Travel S	Clamping force F (kN)	Hand force FH N
K2123.15022A2	1/4-20	16	9	21,5	15	14,7	22,2	70,4	79,2	1,2	4	120
K2123.25022A3	5/16-18	25	11	33,3	24	18,3	28,8	96	108	1,5	8	350